



Every child **EVERY DAY**

Ensuring educational
opportunities for all

November 5, 2024
Special Education
Millage Renewal

WHAT IS THE QUESTION BEFORE THE VOTERS?

A 2.3826 mil renewal to cover unreimbursed costs to provide special education services in Washtenaw County. The millage would expire after 12 years.





WHO IS IMPACTED?

- **More than 6,000 students, or 1-in-7** students, from preschool through age 26 receive special education services in Washtenaw County.
- **Plus, nearly 900 children ages birth to 3** also receive special education services before entering preschool.

Source: MI School Data





SPECIAL EDUCATION IN YPSILANTI COMMUNITY SCHOOLS

- 1 in 6 students receive special education services in Ypsilanti Community Schools.
- In 2022-23, Ypsilanti Community Schools received \$6,374,650 for special education services from the millage.
- If the millage is not renewed, Ypsilanti Community Schools would be underfunded by an estimated \$3.85 million and would need to use general operating funds to cover this shortfall.



WHY IS THIS NEEDED?

- Special education is mandated by the federal and state governments from birth to age 26. However, ***special education services are not fully funded.***
- State and federal funding provides 37% of the funds needed for mandatory special education services.
- **Washtenaw County's Special Education millage generates 61% of the funding that pays for special education services in local school districts and academies.**



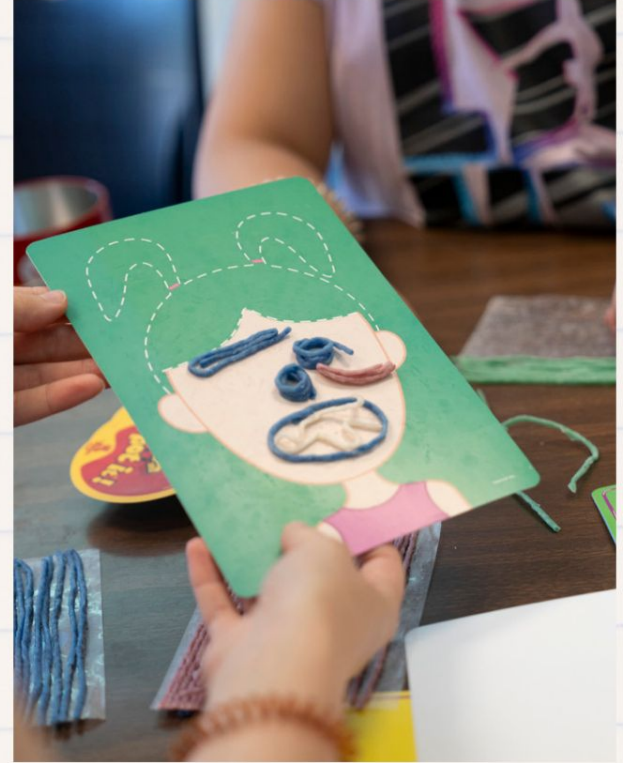
BENEFITS FOR ALL STUDENTS

Renewal would preserve general fund dollars

- If the renewal does not pass, \$57 million of local districts' general fund dollars would be needed to cover the costs of mandatory special education services.

Millage dollars stay local

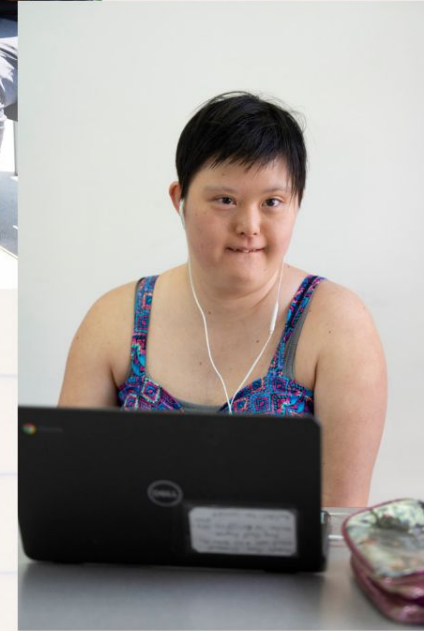
- All millage dollars collected remain with, and are shared by, all public school districts and public charter schools in Washtenaw County.

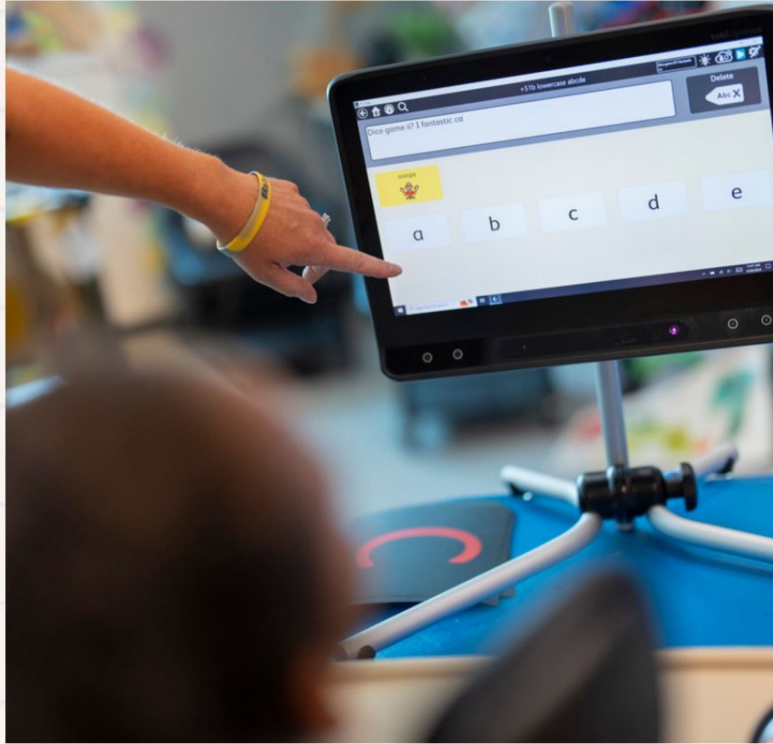


WHO RECEIVES SPECIAL EDUCATION SERVICES IN MICHIGAN?

Michigan law requires school districts to provide special education services to individuals with disabilities from birth through age 26 or upon graduation from high school. Students are eligible for services under one of 13 disability areas, including:

- Autism
- Deaf and hard of hearing
- Deaf-blind disability
- Early childhood developmental delay
- Emotional impairment
- Cognitive impairment
- Severe multiple impairment
- Physical impairment
- Otherwise health impairment
- Specific learning disability
- Speech & language disability
- Traumatic brain injury
- Visual impairment





WHO WOULD THE MILLAGE SUPPORT?

- **Students with learning disabilities** make up the largest group of students receiving special education services
- The second largest group of students eligible for services are **speech and language-impaired**.
- The remaining students have disabilities that range from **mild to severe**.





WHAT SERVICES WOULD THE MILLAGE SUPPORT?

- **Early On** for children ages 0-3 with developmental delays
- **Blended learning environments**
- **Speech, physical and occupational therapy**
- **Transition support** from school to college, work, and life
- **Assistive technology**
- **Nursing, school psychology, and school social work**
- **High-quality professional learning for educators**





WHAT STAFF WOULD THE MILLAGE SUPPORT?

- Special education teachers
- Special education paraprofessionals
- Teacher consultants to assist staff with the education of students with various disabilities
- Special education leaders and administrative support staff





WHY NOW?

- Washtenaw County previously approved two Special Education millages, and both expire in 2025.
- If renewed, then they would be combined into **one Special Education Operating millage that funds special education services for 12 years.**



IF APPROVED BY VOTERS, NO TAX RATE INCREASE

Taxable Home Value	Current Monthly Cost	Tax Rate Change If Approved
\$50,000	\$9.93	0%
\$100,000	\$19.86	0%
\$150,000	\$29.78	0%



HOW MUCH THE RENEWAL WOULD COST

Taxable Home Value	Current Monthly Cost	Tax Rate Change If Approved
\$50,000	\$9.93	0%
\$100,000	\$19.86	0%
\$150,000	\$29.78	0%



ESTIMATED FUNDS LOST IF THE MILLAGE IS NOT RENEWED

YCS will lose an estimated \$3.85 million in Special Education funding if the millage is not renewed.





WHEN IS THE MILLAGE ELECTION?

- Tuesday, November 5, 2024

WHO WILL BE ELIGIBLE TO VOTE?

- Registered voters who are residents in the school districts of: Ann Arbor, Chelsea, Dexter, Lincoln, Manchester, Milan, Saline, Whitmore Lake, and Ypsilanti





Every child EVERY DAY

NOVEMBER 5, 2024

QUESTIONS? WANT TO LEARN MORE?

Contact your local Superintendent
or visit your school district's website

or contact Washtenaw ISD:

www.washtenawisd.org/SpecialEdRenewal
(734) 994-8100

